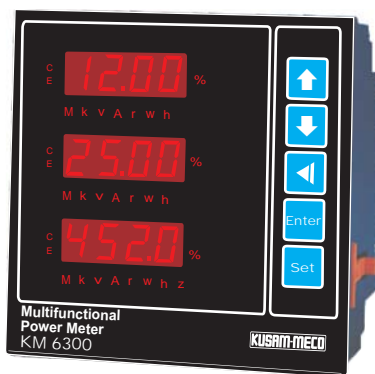


### Model KM - 6300

**Accuracy Class  
0.25%**



#### FEATURES :

Measurement of Current, Voltage, Active, Reactive and Apparent Power, Power factor, Line Frequency, Active & Reactive Energy, Harmonic, & Maximum Demand. (54 parameters).  
High - brightness LED display  
High accuracy up to 0.25 %  
Programmable adjustment for current and voltage transformers ratio  
With RS 485 or RS 232 output

Neutral current can be indicated  
Dual relay contacts for energy or alarm output  
Setting protected by password  
Memory of all setting value and energy data over ten years.  
Outside dimension compatible for DIN standard 144 x 144 mm  
Optional Harmonic Display  
Optional Dual current loop output.

#### SPECIFICATION :

Local Display	Total	Phase1	Phase2	Phase3	Accuracy**
L- L Voltage	*				0.25%
L- N Voltage					0.25%
Line current	*				0.25%
Neutral current					1%
Active power					0.5%
Reactive power					0.5%
Apparent power					0.5%
Power factor	*				0.5%
Frequency	*				0.05%
Active energy +					0.5%
Reactive energy +					0.5%
Active energy -					0.5%
Reactive energy -					0.5%
Total Harmonic - I(1)	*				2%
Total Harmonic - V(1)	*				2%

(1) up to 31 st harmonic \* Average Value \*\*Full scale of ranges

#### Accuracy Performance Range

Current range.....2 ~ 120 %  
Voltage range .....2 ~ 120 %  
Power range.....Current, 2 ~ 120 %, Voltage, 2~ 120 %  
Power factor range.....Cos (sin )0.5 ~ 1  
Frequency range.....45 ~ 70 Hz  
Distortion level from.....10 % to 120 %

#### Input Voltage

Voltage range (line to line).....8 ~ 500 V  
Voltage range (line to neutral).....5 ~ 290 V  
Maximum overload.....750 V  
Input impedance.....200.K.

#### Input Current.

Current range.....5 A or 1 A  
Maximum overload.....6 A, continuous, 50 A 5 sec.  
15 A, continuous, 250 A 1 sec. (Option)  
Input burden.....1VA  
Isolation.....Each phase, 600 V  
Starting current.....1 %, F.S.

#### Power Supply

Nominal voltage .....AC 110 V / 220 V ± 15 %, 50 / 60 Hz  
or DC 110 V, 24 V ± 10 %  
Burden.....(AC) 5 VA, (DC) 5 W

#### Display

Type.....High-brightness RED LED  
Digital height.....0.56", 14.2 mm  
Digital format.....3 rows of 4 digits  
Digits for Wh, Varh, Vah.....8 digits (two rows)

# MULTIFUNCTIONAL DIGITAL TRMS POWER METER - Model KM 6300

## RELAY CONTACTS OUTPUT FOR ENERGY OR ALARM

Energy Value.....100 pulse for 1 K Wh or 1 KVarh  
 Alarm set point .....2 point, programmable  
 Relay contacts .....AC 240 V 1 A, DC 24 V 1 A

## DEMAND

Actual demand with time into period.....A, VA, W Var  
 Time of period.....1 ~ 60 min. programmable  
 Real time clock (option).....HH / MM / SS  
 Max. Demand.....A, VA, W, Var

## ANALOG OUTPUT (OPTIONAL)

Current loop.....11 ~ 32 V, DC 4 ~ 20 mA  
 Output resistance.....600 (24V DC)  
 Output points.....2 points, programmable  
 Output accuracy.....± 0.5 % RO.

## HARMONICS DISPLAY ( OPTIONAL )

Total Harmonics ( Current ) upto 31st Harmonic ( Display upto 15th )  
 Total Harmonics ( Voltage ) upto 31st Harmonic ( Display upto 15th )

## COMMUNICATION

Interface.....RS - 485 (standard ), or RS232 (option)  
 Protocol.....MODBUS, RTU  
 framing  
 Baud rate.....1200 ~ 38400 programmable  
 Address range.....1 ~ 255 programmable  
 Data format.....N.8.1 / N.8.2 / 0.8.1 / E.8.1 pro.  
 Number of meter.....up to 32 on standard RS - 485

## GENERAL

Dielectric strength.....IEC 688 , AC 2 . 3 KV 1 minute  
 between Input / Output / Power  
 AC 2.8 KV 1 minute between all terminal / ground  
 Operating temperature.....0 ~ 60°C  
 Storage temperature.....-10 ~ 70°C  
 Temperature coefficient.....100 PPM / °C  
 Max. Humidity.....95.% RH

## ELECTROMAGNETIC COMPATIBILITY

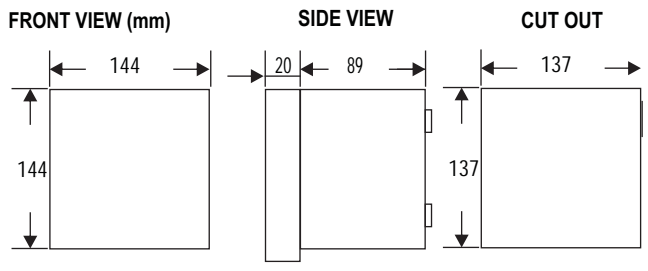
Withstanding impulse voltage.....IEC 1000 - 4 - 5  
 Electrical transient in burst.....IEC 1000 - 4 - 4  
 Electrostatic discharge.....IEC 1000 - 4 - 2  
 Electromagnetic fields immunity.....IEC 1000 - 4 - 3  
 Wave damping .....IEC 255 - 4

## ORDERING INFORMATION

**K M 6300 -**

Model	_____	_____	_____	_____	_____
Input current	_____	_____	_____	_____	_____
1 : 1 A					
5 : 5 A					
0 : Option					
Aux. power supply	_____	_____	_____	_____	_____
1 : AC 110 V / 220 V					
A : DC 110 V					
C : DC 24 V					
RS 485 output	_____	_____	_____	_____	_____
Y : Yes					
N : No					
Analog output	_____	_____	_____	_____	_____
Y : Yes					
N : No					
Harmonic	_____	_____	_____	_____	_____
Y : Yes					
N : No					

## DIMENSION :



All Specifications are subject to change without prior notice



G-17, Bharat Industrial Estate, T. J. Road, Sewree (W), Mumbai - 400 015. INDIA.  
**Sales Direct.:** 022 -2 4156638, **Tel. :** 022-241224540, 24181649, **Fax :** 022 - 24149659  
**Email :** kusam\_meco@vsnl.net, **Website :** www.kusamelectrical.com,