

Model - KM 2008



GENERAL SPECIFICATIONS :

- * **Sensing** : Average sensing
- * **Jaw Opening Size** : 40mm
- * **Function** :
Measurement of AC leakage current, AC Current upto 300A & On-line measurement.
- * **Display Size** : 32mm x 15mm
- * **Test Mode** : Clip-on CT, Integral mode.
- * **Display Mode** : Four Digit LCD display.
- * **LCD Dimension** : 35mm x 21.5mm
- * **Sampling Rate** : About 2times/s
- * **Range** : 0.00mA ~300.0A
- * **Frequency** : 50 / 60Hz; Automatically
- * **Resolution** : 10µA
- * **Line voltage** : Line test under AC600V
- * **Data Hold** : Display shows "DH" symbol.
- * **Out of Range** : Display shows "OL" symbol.
- * **Data Storage** : 99 groups, all used when display "FULL"
- * **Power Consumption** : about 5mW
- * **Peak Hold** : Push "HOLD" without release, the meter will show the peak value during the pushing period.
- * **Battery Voltage** : " " indicating the battery voltage is lower then 7.2V. Then the battery have to be changed.
- * **Operating Temperature and Humidity** : 0°C ~ 40°C : below 80% R.H.
- * **Storage Temperature and Humidity** : -10°C ~ 60°C : below 70%rh
- * **Insulation Strength** : AC 2kV/rms (between the alloy of the clamp & housing)
- * **Auto Power Off** : 5 minutes after power on, it will power off automatically to lower the power consumption.
- * **Rs232 Interface** : Data store in the memory of the meter via Rs232 upload to PC, or on-line monitoring.
- * **Power** : Standard 9V battery.
- * **Dimension** : 175(W) x 70(H) x 38(T)mm
- * **Weight** : Approx. 120g (with battery)

SAFETY :

IEC1010-1, IEC1010-2-032, pollution degree 2, CAT III (600V)

ACCESSORIES :

Carrying Case, Battery installed, User's Manual, RS232 PC Interface CD.

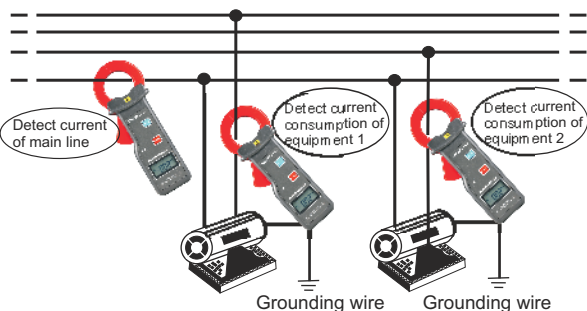
ELECTRICAL SPECIFICATIONS : KM 2008

FREQUENCY (50/60Hz)

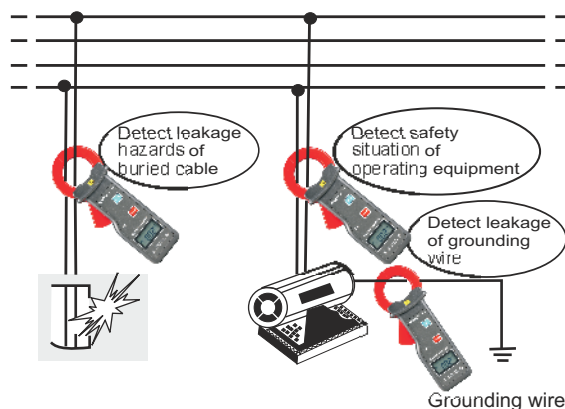
Range	Resolution	Accuracy
0.00mA ~ 60.00A	10 µA	±(1.5% rdg + 5 dgts)
60.00A ~ 199.9A	10 mA	±(2% rdg + 5 dgts)
200.0A ~ 300.0A	100 mA	±(4% rdg + 5 dgts)

DIAGRAM OF GROUND LEAKAGE

(Reference Diagram)



(Reference Diagram)



All Specifications are subject to change without prior notice