

# PROFESSIONAL HANDHELD INFRARED CAMERA TOOLS

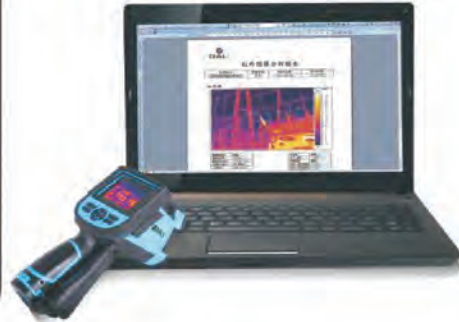
— First choice for preventive maintenance test

LT3-P



### Free-analysis software

LT3-P will quickly download record images and import it to the infrared analysis software in which all reports can be done. WORD software could also be used here for editing your own report templates and complete the image data analysis.



#### Application in electrical & mechanical industry

- Security Detection
- Loose Interface detection
- Component Defective
- Insulation failure
- HVAC Defective
- Repair Verification



#### Application in New Energy

- Measurement for LED chip, lights temperature and cooling process
- Measurement for hot spots of solar modules, solar cell welding process, the inverter and circuit
- Analysis for other industries like temperature distribution of high and low, temperature uniformity, temperature change

## Technical Parameter

Items		LT3-P	
Detector characteristics	Detector type	Un-cooled FPA micro-bolometer	
	Array size/format	160×120	
Image characteristics	Field of view/min focus distance	25°×19°/0.1m	
	Spatial resolution/JIFOVJ	2.72mrad	
	Thermal sensitivity	≤0.06°C@30°C	
	Frame frequency	50/60Hz	
	Focus	Manual	
	Zoom	2X	
	Spectral range	8-14μm	
	Built-in CCD camera	1,300,000 pixels	
Image display	LCD	3.5" TFT LCD, 640 x 480	
	Image display	IR and Visual image can be shifted fast	
	Image processing	Automatic / manual/ auto-enhancement	
	Temperature ranges	-20°C- +350°C(can expanded to 650°C)	
Measurement	Accuracy	±2°C or ±2% of reading, Whichever is greater	
	Measurement correction	Automatic / manual	
	Measurement mode	Up to 4 movable spots. Up to 3 movable areas. Up to 2 movable lines (maximum, minimum and average temperatures). Line profile. Isotherms. Temperature difference. Alarm(voice, color)	
	Image control	Color palette	11 palettes changeable
		Image adjustment	Auto/manual gain and brightness
	Setup functions	Date/time, temperature unit, language	
	Emissivity correction	Variable from 0.01 to 1.0	
	Background temperature correction	Automatic corrections according to user input	
	Atmospheric transmission correction	Automatic correction according to user input object distance, humidity and temperature	
	Image storage	Storage card	2G Micro SD card, max 16G
		Storage mode	Manual/Auto single file saving, IR and Visual image link saving, fusion recording
		File format	Thermal: JPEG with original thermal measurement data included;
Voice annotation		Input via built-in microphone up to 60 seconds of digital voice clip per image stored with image	
Laser pointer	Laser locator	Class 2, 1mw/635nm(red), IEC 60 285	
	Battery type	Li-Ion, rechargeable	
Power source	Battery operating time	4 hours continuous operation	
	Battery charging mode	Intelligent charger or car power adaptor 12V	
	Power saving	Auto-sleep and auto-shut down	
	External power	10-15V DC	
Environment	Operating temperature	-15°C- +50°C	
	Humidity	≤90% non-condensing	
	Encapsulation	IP54	
	Drop test	2m	
Physical characteristics	Weight	980g	
	Dimension ( W×H×D )	105×245×230mm	
Interface	SD card slot	Micro SD card cassette	
	Power	YES, DC 12V	
	Video output	YES	
	Data transfer	USB	

▲ The information contained in this document is subject to change without notice



**KUSAM-MECCO®**

**LT3-P**

**LT3-P**

**— First Choice For Preventive Maintenance Test**

LT3-P are newly designed professional handheld infrared camera tools with 160X120 and 384X288 two different resolution, composed of infrared camera lens, infrared imaging detector module, visible light imaging module, laser module, LCD display, memory card, rechargeable battery, software and hardware processing system. This infrared camera can provide accurate high demand repeated temperature measurement.



**High cost-effective**



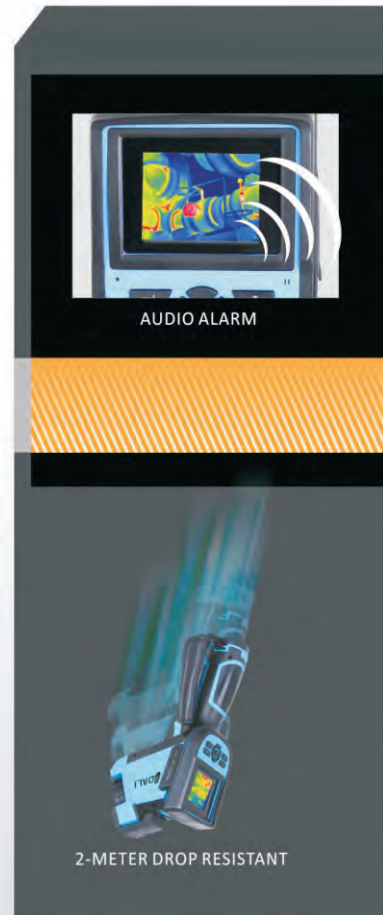
**1.3/3. 2 million pixels ccd image**



**Various temperature Measurement functions**



**2-meter drop resistant**



All Specifications are subject to change without prior notice.